



奧迪美®

RM795

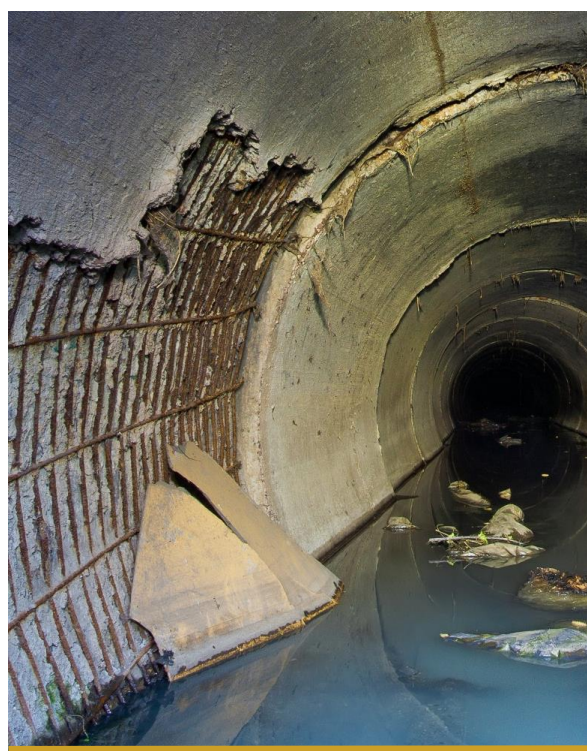
REPAIR MORTAR (CORROSION RESISTING)

HIGH STRENGTH 100% ALUMINATE BASED MORTAR FOR EXTENDED ACID RESISTANCE

PRODUCT DESCRIPTION

OPTIMIX RM795 REPAIR MORTAR (CORROSION RESISTING) is a high quality pre-mixed, mortar based on High Aluminate Cements and OPTIMIX's unique selection of performance enhancing additives. The mortar is dense, strong and water resistant with exceptional resistance to the chemical and mechanical degradation commonly seen in sewers, water treatment plants, waste handling facilities and the like.

OPTIMIX RM795 requires only a measured addition of water & mechanical mixing to achieve a mixed mortar with an extended working time yet gains strength quickly for speedy repair, reinstatement or renovation purposes.



TYPICAL USAGE

- Repair and Reinstatement of Concrete Sewer Lining and Structures
- Lining of Salt Tanks and Adjacent Tipping Zones
- High Strength Chemical Resistant Floor Screeding At Waste Handling Depots

FEATURES AND BENEFITS

- Resistance To Sulphuric Acid And Other Corrosive Chemicals
- High Early and Ultimate Strength
- Good Bonding to Substrate
- Extended Working Time
- Waterproofing Properties
- Extremely Low VOC
- Consistent Quality

TECHNICAL DATA

Product Characteristics ¹⁾	OPTIMIX RM795
Compressive Strength (1 day)	~ 30 MPa
Compressive Strength (7 days)	~ 40 MPa
Compressive Strength (28 days)	~ 50 MPa
Flexural Strength (28 days)	~ 9 MPa
Bond Strength (7 days)	> 1.0 MPa
Initial Surface Absorption Test (ISAT @ 28 days)	~ 0.007 ml/m ² ·s @ 120 minutes
Shrinkage Cracking (Countinho Ring)	NIL
Shrinkage	< 600 µm/m
Typical Workability (Flow Test) (dependent on water addition and mixing method)	150 mm – 190 mm
Setting Time (Initial)	~ 60 minutes
Setting Time (Final)	~ 120 minutes

Mixing	
Water Demand	3.00 L – 3.75 L
Wet Density	~ 2,200 kg/m ³

Packaging & Yield ²⁾	
Yield (per bag)	~ 13 L
Packaging (per bag)	25 kg
Shelf Life	6 months



Environmental Data	
Volatile Organic Compounds (VOC)	≤ 10 g/L
Potential BEAM points	Product is manufactured within 800km of Hong Kong project sites
Packaging Composition	Paper bags incorporating 40% recycled paper

Notes

- 1) The results given here are typical laboratory results. Determined performance can vary slightly due to variations in equipment, users, substrates, ambient conditions etc.
- 2) These are approximate figures and take no account of wastage

Testing Methods	
Compressive & Flexural Strength	EN1015 – 11 / EN196-1
Bond Strength	EN1015 – 12
ISAT	BS EN 1881
Shrinkage	ASTMC596
Workability (Flow)	EN1015 – 03
Setting Time	ASTM C403 – 92 / EN196-3
VOC Content	USEPA Method 24



INSTALLATION GUIDE

(Refer to Method Statement for more details)

SURFACE PREPARATION

Break out the repair area to a depth of at least 10mm. Expose and remove all damaged and degraded concrete and wash the surface with clean water.

The prepared concrete substrate should be soaked with potable water to saturated surface dry conditions, and excess water should be removed prior to installing the **OPTIMIX RM795**.

MIXING

Mix one bag of **OPTIMIX RM795** dry powder with specific amount of potable water to achieve the desired consistency. Mechanical mixing with pan mixer or slow speed drill fitted with a suitable paddle is important. The powder should be slowly added to the required amount of water and mixed for about 3 to 5 minutes or until a lump-free homogeneous mixture is achieved.

APPLICATION

The mortar should be placed and finished well before initial set to ensure its fluidity and allow sufficient time for adjustment and closing the surface. Pay attention to site conditions because hotter temperatures will shorten the working time.

AS A MORTAR:

OPTIMIX RM795 can be applied from 10mm up to 25mm thick under a single application.

AS A SCREED:

OPTIMIX RM795 can be applied from 10mm up to 50mm thick under a single application.

In either case a 2nd layer can be added to double the total application thickness but the first layer should be left at least 4 hours or preferably overnight to gain strength.

FINISHING AND CURING

It is essential for the best performance of the mortar that the substrate is thoroughly dampened before installation and that the mortar is kept damp after installation and for a period of at least 24 hours.

OPTIMIX CURING COMPOUND may be used in some circumstances however, if used in an environment liable to biogenic corrosion then OPTIMIX recommend not using a curing compound. Instead use a light water spray on the surface applied at regular intervals to keep the surface damp.

OPTIMIX RM795 can normally restore full serviceability within 24 hours.

LIMITATIONS

For thicker section build please contact OPTIMIX for advice.

For faster return to service **OPTIMIX RM795** can be optimized to achieve working strength within 2 hours, however this necessitates accelerating the set and shortening the working time. Please contact OPTIMIX for more details.

In order to ensure best performance **OPTIMIX RM795** is designed to work in a narrow range of water additions and requires complete homogeneity after mixing;

- Do not add too much water, if bleeding occurs discard and remix with reduced water.
- Mix using a forced action mixer for the specified period and until the desired consistency has been achieved.
- Once it is mixed to the desired consistency do not add any additional water.



HEALTH AND SAFETY

OPTIMIX RM795 is alkaline in nature and can cause irritations to persons with sensitive skin. Avoid inhalation of dust and contact with skin and eyes. Wear suitable protective gloves and masks while handling the product. If contact with eyes, rinse immediately with plenty of clean water and seek medical advice. This product is non-toxic and is not flammable.

STORAGE

Store the products in a cool and dry place with the original unopened bags on pallets with plastic wrapping. Protect from direct sunlight, rainfall and exposure to high humidity conditions. Avoid excessive stacking of pallets. Failure to comply with the recommended storage conditions may result in premature deterioration of the product or packaging and reduce shelf life.

Important Note: The information contained herein is, the best of our knowledge, true and reliable and is supported by the present state of our knowledge. No warranty is given or implied in connection with any recommendations or suggestions made by us or our representatives as the conditions of use and any labour involved are beyond our control.



OPTIMIX (HONG KONG) LIMITED

20/F, SUP Tower, 75-83 King's Road, North Point, Hong Kong

☎ [852]2395 5388

🛒 [852]2802 6433

☎ [852]2802 6408

🌐 www.optimix.com.hk

